



Are schools back for sustainability?

Guest editorial by *Richard Haigh, SSW Member & headteacher*

Today schools are about getting a good job – a well paid job. And if you have a well paid job, you will be able to buy lots of stuff. So that's the personal deal: work for good results so that you get a good job and have lots of stuff.

Everyone is happy that all this is paid for by taxation. This is because we all believe that our national economic prosperity depends heavily on having a skilled workforce. So that's the collective deal: pay taxes to get everybody to be skilled workers, so that our economy can grow and we can all consume more. All our policies and practices tend to be about education as a means to the ends of individual and collective prosperity. This is the current paradigm within which school education operates.

Unfortunately, this paradigm gives us a bit of a problem: we cannot all consume more. We would need about three planetfuls of resources to support western levels of consumption for everyone on Earth; and the way we are going we are going to use up the one planetful we have got. So, what should we do?

The collective contract has to change. It must become: pay taxes to teach everyone to be intelligent and creative workers who understand global ecology and are committed to survival. In that way, our economy will support a comfortable standard of living for everyone, forever.

Many schools engage with the sustainability agenda but there is a danger that sustainability is translated as simply something to add to what we do or as something to support the more important aim increasing financial prosperity. This is missing the point.

Sustainability has to become what we do. Of course, education can be seen as an end in itself, not just a means to an end, but education must now be about a means to the end of creating a sustainable future. This is the new paradigm within which education must now operate – for our very survival!

This month's *Sustainability Now* headlines at a glance:

◆ *Heritage Shape up—Your help needed* ◆ *Welcome financial boost for 'sustainability' in rural SW* ◆ *SW Universities are green leaders* ◆ *Triple science GCSE to equip children for the future* ◆ *SME's want info & support to take action on climate change* ◆ *Fair Shares, Fair Choice summer sign up's* ◆ *Communities in Control* ◆ *Scotland amongst Europe's leaders* ◆ *Green-fingered grief sweeps nation* ◆ *Sust'Ometer* ◆ *On your radar* ◆ *SW consultations* ◆ *Up & Coming* ◆ *Over to YOU*

As a network of influential individuals your feedback on *Sustainability Now* is very valuable. You can send comments to info@sustainabilitysouthwest.org.uk and view back issues at www.sustainabilitysouthwest.org.uk/sustainability_now (let us know if you've colleagues who need adding to our e-distribution list).

Heritage Shape up – Your help needed

SSW, in partnership with English Heritage, is developing a Heritage module for the region's Sustainable Development Framework - the Shaper (www.shapersw.net). It will use the region's sustainability principles to illustrate ways in which heritage already plays a key role in supporting sustainable development opportunities, where further opportunities exist, and how to address and overcome any barriers. It will contain a heritage checklist, information relevant to different types of heritage practitioners/parts of the sector, case studies, resources and links and will look at how heritage can best contribute to the sustainability of our rapidly changing environmental, social and economic climate. We would like to hear from people in all parts of the heritage sector (including property owners and managers, curators, Conservation Officers, Archaeological Officers designers and planners) to ensure that this module is comprehensive and reflects all around good practice. Please follow the link and complete and return the short questionnaire by 30 September: www.shapersw.net/rsdf.php?ID=79&category=79&stylesheet=style



Welcome financial boost for 'sustainability' in rural areas in the South West

Fifteen 'rural partnerships' in the south West were recently awarded a share of £33 million from the EU and Defra-funded Rural Development Programme England or RDPE. The funds were allocated for community partnerships to bring about 'lasting improvements to the life and economy' of their communities. The winning bids, which were spread across the region, will address issues such as regenerating local economies, climate change mitigation, renewable energy, and improving transport links between rural areas and market towns.

The bids had to show how their objectives fitted with RDPE priorities to support the creation of 'genuinely sustainable farming, forestry and food sectors', whilst also providing benefits for local economies, local communities and the environment. The successful groups will be implementing their projects from the autumn onwards.

Whilst the funding is great news for the areas that received it, it is important that the programmes that flow from it achieve the RDPE sustainability goals, which are consistent with the region's own Sustainable Development Framework, the Shaper (www.shapersw.net). In delivering their projects, groups should also be encouraged to support surrounding communities to progress similar solutions, so that the wider region can also benefit.

More details of the winning bids, and of the RDPE program and funding, can be obtained from the administrators of the RDPE, the South West RDA, www.southwestrda.org.uk

South West Universities are green leaders

Universities from the South West have topped the People and Planet Green League 2008. University of Gloucestershire, University of Plymouth and the University of the West of England top the UK league. The criteria includes the establishment's environmental policy, staff, auditing, Fairtrade status, ethical investment, energy suppliers, recycling, water consumption and carbon emissions and results shows a remarkable improvement in environmental management and performance in the UK's Higher Education sector over the past year. The University and College Union (UCU) now calls for a carbon reduction strategy on every university campus.

Triple science GCSE recommended to equip children for the future

The CBI has recommended all 14-year-olds getting 'Level 6' or above in science are automatically entered for 'Triple science' GCSE, covering physics, chemistry and biology - currently taken by just 7% of 16-year-olds – to better equip themselves for the future. The UK will need more science skills to prosper - there will be more than 2m extra jobs requiring people to have science skills – particularly in the energy industry and in tackling climate change - by 2014 (CBI estimate based on Skills for Business's report Working Futures 2004-2014) and recruitment firm Acre Resources reports a 180% increase in the number of jobs related to energy reduction and emissions management increasing over the past year. The Future Innovators Team at the National Endowment for Science, Technology and the Arts recently reported that "the skills of problem solving, enquiry and independent thinking that science encourages are key for young people to be better equipped for the future." Full story at www.wired-gov.net/wg/wg-news-1.nsf/lfi/DNWA-7HGHYF

And it's not just science sector jobs that are 'going green' – the government predicts the number of people working in the environmental sector is expected to top 1 million within the next 20 years -- more than double today's figure of 400,000.

SME's want more information and support to take action on climate change

Climate South East has produced a report on the attitudes towards climate change of SMEs in the SE of England – 'Climate Change and Small Businesses: How directors are responding to the challenges of climate change'. Four main attitudes towards climate change were identified: Climate change is a moral issue; the impact of climate change is a business issue; as is climate change legislation and associated costs, but climate change is still seen as a low priority.

The report showed that nearly all (95%) SMEs are engaged in some kind of activity to reduce carbon emissions (cutting waste and reducing energy consumption being the most popular mitigation activities), with 75% undertaking activity to respond to the possible consequences of climate change. But more than 50% of directors and managers felt they would be encouraged to take more action on climate change by factors such as 'external requirements', 'customer pressure', 'efficiency and competitiveness', and 'unforeseen shocks', and current legislation on climate change may not be strong enough to have an impact on SMEs. Issues discouraging SMEs from responding to climate change include a lack of resources, concerns about whether their activities will make a difference and the behaviour of public sector bodies. Although local authorities are one of the most contacted organisations for information on climate change issues, they are also seen as a barrier to increasing climate change related activities, for example by not offering plastic recycling facilities for businesses. Interest in receiving guidance on how to calculate carbon emissions and how to adapt to the impacts of climate change is also particularly high (around 75%). This is particularly true for those who feel that they do not currently have enough information to take action on climate change (87%). The full report is available at:

http://www.climatesoutheast.org.uk/images/uploads/Climate_Change_and_Small_Businesses_Final.pdf



Fair Shares, Fair Choice summer sign up's

The number of individuals, organisations, businesses and community groups who support the principle of SSW's low carbon campaign *Fair Shares, Fair Choice* (FSFC) - of 'a globally fair and safe carbon share for everyone' - is now just shy of 1,200 (1,192), boosted by FSFC's participation in a National Trust green fayre at Studland Beach, Swanage in August, providing tips for going low carbon and carbon calculator worksheets to members of the public. Visit the FSFC stand at ENVEC 2008, 2 October, Winter Gardens, Weston-super-Mare (see 'On your radar?' below). Add your name to the campaign, 'Sign Up' at www.fairsharesfairchoice.com

Sustainable communities: Communities in Control

The Communities in Control: real people, real power white paper, launched in July, is about passing power to communities and giving real control and influence to more people. Details include how the Government is supporting community effort in tackling climate change and what individuals can do to make a difference. See

www.communities.gov.uk/communities/communityempowerment/communitiesincontrol/

Also, new statutory guidance has just been published for local authorities and their partners on creating strong, safe and prosperous *sustainable* communities, which is part of the Government's plans to put the 'governing back into local government'. See

www.communities.gov.uk/publications/localgovernment/strongsafeprosperous

For further resources on 'Achieving Genuinely Sustainable, Resilient Communities,' the theme of SSW's last Local to Regional Sustainability Forum, visit www.sustainabilitysouthwest.org.uk/projects/local_to_regional/ and the Shaper's Sustainable Communities module, at <http://swrsdf.net/rsdf.php?category=60&stylesheet=style>

Scotland amongst Europe's leaders

Scotland will join European leaders in developing innovative transport initiatives to encourage more people out of their cars. The Sustainable Travel Demonstration Communities project will showcase a range of transport initiatives that would be good for people's pockets, health, communities and the planet. There are currently three "Sustainable Travel Demonstration Towns" running in England - in Darlington, Peterborough and Worcester - already showing impressive results. Scotland initiatives will include proposals for the first self service bike rental schemes anywhere in the UK. This will help Scotland in its efforts of reaching its ambitious climate change target - reducing Scottish emissions by 80% by 2050. Further help will come from a £10 million prize awarded to Scotland. The international Saltire Prize will be used to push the frontiers of innovation in clean, green marine renewable energy. Scotland's renewable energy potential could see it provide 25% of Europe's wind power, 25% of its tidal power and 10% of the continent's wave power. More information at

www.wired-gov.net/wg/wg-news-1.nsf/lfi/DNWA-7HGHQ4

Green-fingered grief sweeps the nation

If you are struggling to cope with the havoc wreaked in your flowerbeds by recent extreme wind and rain, you're not alone. The Royal Horticultural Society has diagnosed a new national affliction: plant bereavement. About half of all callers to their plant advisory service are dealing with the trauma induced by wilted, leafless or damaged plants. Luckily, the team from the RHS are able to deal not only with horticultural questions, but also emotional ones. Many gardeners, they say, feel personally connected to their plants, particularly when they have been nurtured for many years, or given by someone special. The Guardian G2 (18 Aug, p.3)

Sussed!

👍 **Reducing baggage** The National Trust have cut its plastic bags by 95% after starting levying a five pence charge as part of a drive to make its' properties more environmentally friendly. Daily Telegraph (13 Aug, p.9)

👍 **Community gardens grassroots revolution** The Observer (10 August, p.20) reports the success of a grassroots green revolution as community gardens become ever more popular. Turning derelict ground into gardens began during the food shortages of the Second World War and it is now seeing a renewed lease of life. The Federation of City Farms and Community Gardens say that the gardens help raise awareness of the importance of local food production, protecting environments and reducing food miles.

👍 **New battery regulations** New Regulations for businesses wishing to put batteries on the UK market from September 2008 have been published. They aim to reduce the environmental impact of the millions of portable, industrial and automotive batteries used in the UK each year by decreasing the levels of heavy metals contained and introducing a labelling regime designed to achieve high recycling rates. For more information visit www.wired-gov.net/wg/wg-news-1.nsf/lfi/164795

👍 **Fourth largest offshore wind farm in UK is approved** Sheringham Shoal, The 315MW offshore wind farm, is planned off the coast of Norfolk and will comprise of up to 108 turbines, enough to power the equivalent of around 178,000 homes with electricity. Wind has overtaken hydro power as the second largest renewable energy generation source in the UK. www.wired-gov.net/wg/wg-news-1.nsf/lfi/DNWA-7HGM5P

👍 **Innovative hot meals service receives national recognition** Eight schools in Bridport, West Dorset are celebrating being named as a finalist in the 2008 GO Awards for Excellence in Public Procurement. The schools have worked with local social enterprise, Local Food Links, to create a user-led school meals service which now serves up to 500 meals a day. The schools have not had kitchens since 1981, and the alternative to a "third sector" approach was ready meals made in a Nottingham factory and trucked down to Dorset. For further information about Local Food Links' work, contact tim.crabtree@localfoodlinks.org.uk

👍 **Community ties** The vast majority of Brits (95%) are on first name terms with their neighbours and well over half (58%) socialise with them. When asked why, over half of us (55%) want to feel part of our communities. www.direct.gov.uk/fulloflife

So last century...

👉 **Arctic meltdown speeding up**

Scientists warn that the North Pole could be free of ice in just five years' time instead of 60. Mark Serreze, of the US National Snow and Ice Data Centre in Boulder, Colorado said "We always knew it would be the first region on Earth to feel the impact of climate change, but not at anything like this speed. What is happening now indicates that global warming is occurring far earlier than any of us expected." The Observer (10 Aug)

👉 **Junk food may harm toddlers' ability to learn** Children who are brought up on a diet of junk food at the age of three are more likely to make slow progress at school according to a research team from the Institute of Education at London University and the Children of the 90s study at Bristol University. They found diet in the preschool years has more influence on a child's ability to learn than the quality of school dinners. The Guardian (14 Aug, p.5), Daily Mail (14 Aug, p.29) The Daily Telegraph (14 Aug, p.2)

Sussed!

👍 **Lottery funds facelifts for community hubs** £3.5 million is being invested into 13 community hubs by the BIG Lottery Fund to help transform halls or build new modern, sustainable places for everyone to use and enjoy. Two hubs will benefit in the South West - Harmans Cross Village Hall, Dorset and Trelander & St Clemens Tenants and Residents Association, Truro, Cornwall. The Truro project will see an environmentally friendly community centre built on the neighbouring Trelander and St Clements estates located just outside Truro city centre. The building will be insulated with lamb's wool and straw bales and has been designed with broad windows that will allow natural light to flood in unobstructed.

👍 **Childs Play** The Big Lottery Fund is bringing play to life for thousands more children across with a multi-million pound investment in children's play. The funding is providing new opportunities for young people, improving their physical, emotional and social wellbeing. North Devon District Council and West Devon Borough Council's will benefit in the South West. The Children's Play programme has put an emphasis on building the capacity of the play sector as a whole to ensure its long-term sustainability and has established a regional infrastructure support scheme, Play England, promoting long-term strategic and sustainable provision for play beyond the life of the Big Lottery Fund's Children's Play programme. More information at www.wired.gov.net/wg/wg-news-1.nsf/lfi/DNWA-7HQEZ2 Play England is also working closely with Sustainability South West on its Planting Places urban greenspace initiative see www.plantingplaces.org.uk.

👍 **Sustainable procurement and carbon emissions delivery plan** Companies providing green products and services can expect a boost - the government has unveiled its long-anticipated delivery plan for meeting its targets on environmentally sustainable procurement and carbon emissions. Following its recent commitment to ensure government IT operations are carbon neutral by 2013, the Cabinet Office released a plan to ensure departments are environmentally sustainable in procurement decisions and to better meet targets to cut emissions, waste and water use across facilities. Central to the new strategy are new rules that will ensure the performance of civil servants is judged on their ability to deliver against sustainability targets.

www.businessgreen.com/business-green/news/2223596/government-outlines-green

So last century...

👉 **Climate Change affects UK's birds**

Climate change is causing a number of widespread British birds to lay their eggs much earlier than 40 years ago, causing problems with their food supply. The consistent decline in bird populations is another indication that the variety and richness of our countryside is being lost. Dr Mark Avery, the RSPB's Conservation Director, said: "Birds are having to respond rapidly to climate change to survive. As often before, birds are acting like canaries in a mine shaft and giving us early warning of dangerous change."

www.wired.gov.net/wg/wg-news-1.nsf/lfi/DNWA-7HJKT4

👉 **Charities lagging on ethical investment**

A 2006 study by ACCA found that just 55% of large UK charities had an ethical investment policy but new research by the EIRIS Foundation found that 83% of the general public would be less likely or unwilling to give to a charity if they found out it was not investing ethically and almost all (91%) of those surveyed agreed that charities should be investing their money in an ethically or socially responsible way. Full report at www.eiris.org/

On your radar?

ENVEC 2008: making sustainability happen in a changing climate, 2 October, Weston-super-Mare – free event -Delegate registration now open Conference, expert briefings, low carbon solutions display & information exchange, for decision makers, managers with energy / environmental responsibilities, and other business professionals. Themes include: latest climate change scenarios; SW climate change action plan; delivering sustainable solutions; techniques for motivating others; carbon neutral buildings; low carbon transport. For programme and to register, visit: www.oursouthwest.com/envec

Green day: A free climate change activity kit for schools

Green day is a one-day event for schools about climate change, sustainability and the built environment. It is a fun and flexible way to integrate these themes into lessons and school activities. A free activity kit, promoted by CABE, provides ideas, activities and resources for holding a green day in your school, making it a more sustainable place in which to work, play and learn. Download the kit PDF at www.cabe.org.uk/AssetLibrary/11438.pdf

Sustainability news and resources in the Higher Education Sector

For a round up of new books and resources available on higher education and sustainable development, visit www.heacademy.ac.uk/ourwork/learning/sustainability/sustainability_HE_news

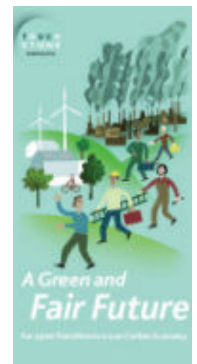


Sustainable Marked contribution for Social Enterprises

Congratulations to Bristol Community Transport, South Molton Recycle, The Zebra Collective, Mid-Devon Community Recycling, COSMIC, Co-operative Group SW, Devon Doctors and Eden Project who have all been awarded the Social Enterprise Mark. Social enterprises are businesses set up to tackle social or environmental issues, so rather than generate profits for shareholders, their main aim is to earn income to create social or environmental benefits. The 'Mark is a way to promote value-driven business of social enterprises to customers. www.socialenterprisemark.co.uk/

Fair transition to a greener economy

The TUC has urged the government to work more closely with employers and unions to start implementing policies that will allow the UK to become a world leader in the new green economy. In *A Green & Fair Future: For a Just Transition to a Low Carbon Economy*, the TUC reports that the UK is lagging behind countries like Spain, Germany and Denmark who are creating thousands of jobs and billions of pounds in revenue by actively supporting green businesses. The TUC is calling on the government to look to the success of employer-union partnerships in the workplace as a guide for how active collaboration can drive green innovation in the UK and cut carbon emissions. The report is £10, purchase at:



www.tuc.org.uk/publications/viewPub.cfm?frmPubID=549

No more 'Greenwash!'

The Carbon Trust is offering organisations a way to prove they have made genuine reductions in their carbon emissions and are not just hawking 'greenwash'. Its new "Carbon Trust Standard" certificate is the world's first to require an organisation to take action itself rather than use controversial carbon offsetting. www.carbontrust.co.uk

Adult Learners' Week Awards 2009 now open

If you know someone whose remarkable learning achievements deserve recognition and could inspire others, you can nominate them for an Adult Learners' Week Award. There are awards for individual, group and family learners, as well as the Opening Doors Awards for projects with an innovative approach that motivates and inspires learners. Nominees will receive a Certificate of Achievement and winners a learning voucher. See www.alw.org.uk for info and the nomination form.

Bids to Revolving Green Fund open

Applications are invited for a new £30 million fund available from 2008-11 which provides recoverable grants to institutions for projects that reduce their greenhouse gas emissions. The Revolving Green Fund is a partnership between HEFCE and Salix Finance Ltd to help institutions adopt a low carbon approach to energy. All HEFCE-funded higher education institutions can apply to the fund through two strands: an institutional small projects fund and a transformational fund. Outcomes of consultation and invitation to submit applications available at www.hefce.ac.uk/pubs/circlets/2008/cl20_08/

Soundings in Sustainability Literacy Event, 21 November, University of Gloucestershire, Cheltenham – free event

A free one day event for sustainability educators from across the country to gather to discuss: • *what sustainability skills do graduates need to deal with the challenges of the 21st century?* • *what active learning techniques can help them gain those skills?* The insights generated will be transformed into a book and video resource to help inform the embedding of sustainability literacy skills across higher education. For details and an application pack contact Seek Pang: spang@glos.ac.uk Website: www.eauc.org.uk/soundings_in_sustainability_literacy_a_national_es

Consultations currently 'open' for responses which could impact on sustainability in the region & wider

Towards a comprehensive and ambitious post-2012 climate change agreement

European Commission, Open 21/08/08 Close: 29/09/08

The Commission seeks views of all stakeholders (individuals and organisations) on elements of the Bali Road Map that would enable the world to limit global warming to no more than 2°C. http://ec.europa.eu/environment/consultations/template_climatepost2012.pdf

Adapting the UK to Climate Change

The Royal Commission on Environmental Pollution, Open: 29/7/08, Close: 10/10/08

The Commission is keen to hear the views of organisations and individuals with an interest in adaptation to climate change. www.rcep.org.uk/climatechangeadaptation.htm

Consultation on Natural England's draft Enforcement Policy

Natural England, Open: 21/08/08, Close: 18/10/08

A consultation on Natural England's proposed 'enforcement' approach, which is intended to help ensure the protection and enhancement of England's natural environment.

<http://www.naturalengland.org.uk/consultations/enforcement-policy/default.htm>

Consultations on promoting property-level flood protection & resilience, & a New Strategic Appraisal Framework for Flooding & Coastal Erosion Risk Management

Defra, Open: 21/8/08, Close: 31/10/08

Two consultations: On options for increasing the use of property-level measures by householders to reduce the impacts of flooding, and on new flood risk appraisal guidance. <http://www.defra.gov.uk/corporate/consult/flood-protection/index.htm>

Up & coming...

CREATE Ecohome 'after hours', 4 September, Smeaton Road, Bristol

An 'after hours' chance to find out about greener living and building: the CREATE Ecohome is opening its doors from 4.30-7.30pm. Explore this full-size eco show home and experience the organic wildlife-friendly garden. Admission is free. Normal opening times 12-3pm Mon-Fri. For more info see www.ecojam.org/interact/events/ecohome-open-evenings



Organic Food Festival, 6 - 7 September, Bristol Harbourside

The launch of organic fortnight (6-21 September), the Soil Association festival - Europe's largest celebration of all things organic – will incorporate food markets, organic food, drink, fashion, skincare and homeware products, a green planet pavilion, demonstration kitchen, talks programme, food cruises around the famous harbour, and an arts and entertainment fringe! See www.soilassociation.org/festival for more information.

The Tour of Britain, 7-14 September, in the South West on 9 September, Chard to Burnham-on-Sea

GB has proved it pays to travel by low carbon means – 8 Gold, 4 Silver & 2 Bronze medals achieved by team GB in cycling events at Beijing Olympics. If you've been inspired to leave your car at home and get on your bike, why not take part in The Tour of Britain. As the Mayor of London Boris Johnson says, "Cycling is a fantastic way to travel - it's good for the environment, it's good for the health and it's good for the wallet." www.tourofbrampton.co.uk/

All Our Futures Conference, 9 – 11 September, University of Plymouth

The 3 day conference will explore how to shape and deliver an education for sustainable futures. Speakers include Prof. David Orr & Mark Lynas. Days 1-2 will focus on Higher education and day 3 on sustainable education within workplaces and communities. 'Open Café' events on the last day will allow businesses and community groups to showcase their approaches to sustainable practice and share ideas and experiences. To register visit www.csf.plymouth.ac.uk

Transition Stroud presents...Open Homes for a sustainable future: 13 - 14 September

A chance to visit homes around Stroud to see renewable energy in action, discuss energy efficiency and get advice, grants and money-off eco-renovations. Over the weekend 10 homes will be open to the public plus there's a chance to see Stroud's first residential wind turbine, the largest PV generation in the country on private housing and go on a tour of Tranquility House - dubbed 'the most energy efficient house in the world'. On 13 Sept in Randwick at the opening of what hopes to be the country's first carbon neutral village hall, there will be exhibitions of some of the measures that people can take and grant information. For times and details see www.stroudopenhomes.org.uk/

The Sustainable University: Relating Ecological Thinking, Learning & Research, 19 September, UCL

'The modern university is at a tipping point. It can either continue its contemporary flirtation with the corporate world and submit to its assigned role as enforcer of the status quo or it can reassert its claim to leadership on society's intellectual frontier...Only by reinventing itself can the university hope to become society's champion for the locally-

rooted global sustainability that is the quest of people & communities everywhere' (Prof. William E. Rees, University of British Columbia)

Law and policy is increasingly touching the university, but how much can the university influence change? A one-day symposium will question more *fundamentally* the role of the university in 'sustaining the world', how to 'embed' sustainable development in the curriculum and how to create genuine and valuable intellectual and practical links with other disciplines, local communities and research networks. For a place or more info, email marianne.knight@ucl.ac.uk

Access 08: Easy Ways to Win, 22 September, Bristol Marriott Royal Hotel

The SW RDA, in conjunction with SW Tourism and Tourism for All, is hosting a free conference on accessibility in tourism providing advice and guidance to businesses in the tourism industry on how they can take simple steps to improve their offer to visitors with disabilities and their families. It will build on the business case for preparing the industry to meet the requirements of this market in the lead up to the 2012 Olympic and Paralympics Games and beyond. Visit www.swtourism.co.uk/content/about-us-conferences-events/access-08-easy-ways-to-win.ashx to book.

"How organisations can work with schools to support delivering ESD", 25 November, Dartington, Devon

This day will look at phases from foundation to GCSE to examine how organisations involved in sustainable development can link into school initiatives. Cost: £95/£60
www.wildwise.co.uk/esd.html

Over to YOU

Remember – we're your independent sustainability champs – and as an independent charity we're here to act as a critical friend for the common good. If you're involved in action for sustainability – let us know and we can champion it! Equally if you're experiencing barriers to adopting a more sustainable approach let us know so we can feed back messages on your behalf. You can also tell us about local and regional events coming up over the next month so we can include this in the next edition *Sustainability Now*.

Contact us at: info@sustainabilitysouthwest.org.uk **Deadline for submissions: close of Thursday 25 September 2008**

Other news from Sustainability South West

More SSW news available on our website: www.sustainabilitysouthwest.org.uk

Regular updates on **SSW coordinated projects** available from:

Fair Shares, Fair Choice – the SW's growing low carbon movement

www.fairsharesfairchoice.com

Sustainability Shaper – the SW's regional sustainable development framework

www.shapersw.net

Future Foundations – the SW's sustainable construction charter

www.futurefoundations.co.uk

Future Footprints – the SW's sustainable tourism visitor campaign

www.futurefootprints.org.uk

Planting Places – networks for SW urban greenspace project

www.plantingplaces.org.uk

Sustainability Now is a monthly bulletin from Sustainability South West, the region's independent Champion Body for sustainable development. SSW is a charity and its Mission is: 'To champion and assist action now to achieve a South West that is genuinely sustainable: healthy, productive, socially-just and living within environmental limits.'



Sustainability South West, 2 Rivergate, Temple Quay, Bristol BS1 6EH t. 0117 900 1751 f. 0117 900 1909 www.sustainabilitysouthwest.org.uk Registered Charity no. 1106125 Company Ltd no. 3899945

Disclaimer: the views expressed in this newsletter do not necessarily represent the views of SSW's membership as a whole.

Unsubscribe: If you wish to be removed from *Sustainability Now's* distribution list please contact us info@sustainabilitysouthwest.org.uk